

**Winmark**  
est.1982

**WINMARK WORLDWIDE**

R.O. : WX 43 Basti nau, Near Arora Iee Factory

M.U. , Plot no.7, Sangal sohal, opp jalandhar kunj gate no. 2

Contact: +91-94172-77537, +91-75474-77537, Whatsapp: +91-7043656457

email: [info@winmarkindia.com](mailto:info@winmarkindia.com) | website: [winmarkindia.com](http://winmarkindia.com)

**CATALOGUE 2025-26**

WINMARK  
est.1982

# PRODUCT CATALOGUE

2025 - 26



## Winmark Worldwide -

At Winmark Worldwide, we are passionate about crafting high-performance sports shoes that empower athletes to achieve their goals. With over 40 years of expertise, we have become a trusted name in the industry, blending cutting-edge technology, premium materials, and expert craftsmanship to create footwear that enhances agility, comfort, and durability.

As a global brand, we export our products to Asia, Africa, North America, and South America, ensuring that athletes worldwide experience superior quality and innovation.

Guided by innovation and excellence, we continue to push the boundaries of sports footwear, helping athletes Make It Happen on and off the field.

INTRODUCTION		HARA (FUTSAL)	29
ULTIMAX (CRICKET)	01	F-10 (FUTSAL)	31
MACE (CRICKET)	03		
MASTER (CRICKET)	05	KINECT (ATHLETIC)	33
CLASSIC (CRICKET)	07	FALCON (ATHLETIC)	35
LEGENDKING (BADMINTON)	09	EXECUTOR (BASKETBALL)	37
AEROCLIMAX (BADMINTON)	11		
THRILLA (BADMINTON)	13		
SMASHER (BADMINTON)	15		
GOLDEN BOOT (SOCCER)	17		
RAPID-O (SOCCER)	19		
ELIMINATOR (SOCCER)	21		
FORCE-2 (SOCCER)	23		
ATTACK (SOCCER)	25		
CR-7 (SOCCER)	27		





# NOTE

ALL PRICES MENTIONED ARE F.O.B. (FREE ON BOARD) RATES.

CUSTOMIZED COLOR OPTIONS ARE AVAILABLE EXCLUSIVELY ON BULK ORDERS.

ALL SHOE SIZES LISTED FOLLOW THE UK/INDIA SIZE CHART.

SPIKE NAILS ARE AVAILABLE SEPARATELY FOR BOTH CRICKET AND ATHLETIC SPIKES, ALONG WITH THEIR KEYS. ADDITIONAL SPIKE NAILS AND KEYS CAN ALSO BE SUPPLIED ON REQUEST, SUBJECT TO EXTRA CHARGES.

WINMARK

WINMARKINDIA.COM



W I N M A R K

CRICKET

2 0 2 5 - 2 6



**Winmark Worldwide -**

Winmark Cricket Shoes are built for stability, comfort, and lasting performance. With strong grip soles, lightweight design, cushioned midsoles, and breathable mesh, they give cricketers the confidence to run, turn, and play longer without fatigue.

Backed by 40+ years of expertise, Winmark Worldwide combines innovation with eco-friendly craftsmanship. Trusted across continents, our cricket shoes deliver the perfect blend of power, precision, and durability for every game.



# ULTIMAX

# CRICKET

ARTICLE NO.  
WWCR11



WHITE/BLACK/FLORO-GREEN



ROYAL BLUE/AQUA-BLUE



SKY-BLUE/ORANGE

SIZE : 5 TO 11  
USD 15.75



**Sole Material:  
Phylon Rubber  
TPU Spikes for  
better grip**

This highlights the pointed studs visible in the shoe sole, designed for traction on the cricket field.



**Padded heel collar for comfort**

The image points to the heel area, emphasizing its padded construction for ankle support and comfort.



**Reinforced side panel for durability**

The pointer highlights the colored side overlays, which typically strengthen the shoe and provide structural support.

**Layered PVC upper for durability and protection**

This covers the material around the toe and sides, intended for durability and protection.



**Shock-absorbing midsole for cushioning**

The pointer here is at the shoe's sidewall, which often includes extra cushioning for player comfort.





CRIKET

ARTICLE NO.  
WWCR10



FLORO-YELLOW/ROYAL BLUE

SIZE : 6 TO 11  
USD 8.72

MACE



ROYAL BLUE/AQUA-BLUE



SKY-BLUE/ORANGE



ROYAL BLUE/BLOOD-RED



**Sole Material:**  
**Phylon Rubber T.P.U.**  
Designed with multi-directional studs for unbeatable grip and stability on turf.



**Reinforced Heel Support**  
Offers extra stability and ankle protection with added mesh padding for superior comfort during long hours on the field.



**Durable PVC Overlay**  
Strong synthetic overlays enhance durability and deliver long-lasting performance.

**Embossed Toe Design**  
Reinforced embossed pattern enhances durability and provides better control during batting and fielding movements.



**Cushioned Phylon Midsole**  
Shock-absorbing cushioning for comfort, reducing strain on feet and knees.





# MASTER

# CRICKET

**ARTICLE NO.  
WWCR07**



**WHITE/YELLOW/LIGHT-BLUE**

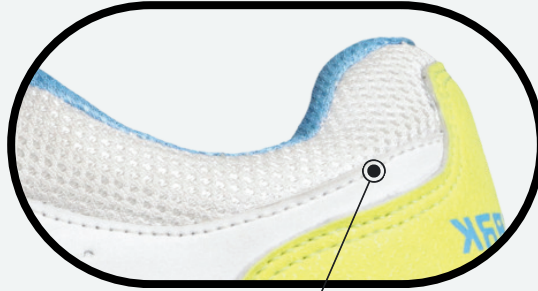


**ROYAL-BLUE/ORANGE**

**SIZE : 11(JR) TO 11**  
**USD 8.13**



**Sole Material:**  
**Phylon Rubber T.P.U.**  
Turf-Grip Rubber Sole  
Studded outsole  
designed for powerful  
traction and stable  
footing on cricket turf.



**Reinforced Heel Guard**  
Extra support with padded mesh for  
comfort, reducing strain during long play.



**Breathable PVC Upper And Mesh**  
Lightweight and ventilated construction  
keeps feet cool and match-ready.

**Printed with Extra Support**  
Reinforced print layer adds durability and  
stability for confident play.



**Phylon Cushioned Midsole**  
Shock-absorbing midsole ensures  
lasting comfort and reduces joint impact.



# CRICKET



**ARTICLE NO.  
WWCR01**



**SIZE : 11(JR) TO 11**  
**USD 4.62**

## CLASSIC





**Sole Material:**  
**PVC Sole for durability and grip.** PVC is a widely used, tough sole material in cricket shoes designed for reliable traction and long wear



**Padded heel collar for comfort and support.**  
 This area provides cushioning around the ankle, vital for player stability and comfort



**Reinforced side overlays for structural support.**  
 This highlights the extra material or design on the sides, strengthening the shoe and helping keep its shape

**Layered PVC upper for durability.**  
 The upper part uses layered PVC rather than mesh, making it tough and resistant to abrasion



**Shock-absorbing midsole for cushioning.**  
 This describes the side area above the sole, which typically offers added comfort and impact resistance during matches



W I N M A R K

# BADMINTON

2 0 2 5 - 2 6



## **Winmark Worldwide -**

Winmark Badminton Shoes are built for speed, grip, and agility on the court. With non-marking soles for strong traction, cushioned midsoles for comfort, and breathable mesh uppers for airflow, they offer the perfect mix of support and durability. Lightweight in design, they help players move faster and play longer with ease.

With 40+ years of expertise, Winmark Worldwide blends innovation and eco-friendly craftsmanship to create shoes trusted by athletes worldwide. Our badminton shoes enhance stability, performance, and confidence—making every game sharper and stronger.

# BADMINTON



**ARTICLE NO.  
WWBD14**



**WHITE/BLUE/FLORO-YELLOW**

**SIZE : 1 TO 11**  
**USD 7.59**

## LEGEND-KING



**BLACK/ORANGE**



**ROYAL-BLUE/WHITE**



**GREY/WHITE**



**Layered synthetic upper for durability and support.** the material provides upper durability and lightweight stability with easy air flow for longer rallies.



**Padded heel collar for ankle comfort.**  
This area highlights cushioning for enhanced support and comfort during rapid footwork

**Shock-absorbing midsole for protection and comfort.**  
This part absorbs impacts from jumps and pivots, protecting feet and joints during play



**Sole Material: Phylon Rubber**  
**Crape marking sole**  
This brief phrase clearly highlights the key sole materials and the non-marking feature suitable for badminton shoes.

**Breathable mesh in shoes allows air to flow freely, keeping feet cool and dry.**  
It reduces sweat, odor, and discomfort, improving comfort and performance during play.



**ARTICLE NO.  
WWBD17**



**BLACK/FORO-GREEN**

**SIZE : 5 TO 11  
USD**

## AERO-CLIMAX



**BLACK/FORO-GREEN**

**Aeroclimax is a balance of comfort, stability,  
ventilation, and court grip—  
making it a strong choice for serious badminton players**



# BADMINTON



### Sole Material: Phylon Rubber + TPU non-marking sole

This sole is engineered for shock absorption, grip, and won't leave marks on indoor courts



### Cushioned ankle support

This area provides extra padding for comfort and stability during play

**Breathable mesh upper**  
The mesh allows airflow, keeping feet cool and comfortable through strenuous matches



### Shock-absorbing midsole

This area cushions impacts and improves comfort during jumps and fast movement



### Reinforced side overlays

These overlays add structure and durability, supporting lateral footwork and quick direction changes



# BADMINTON



**ARTICLE NO.  
WWBD16**



**WHITE/BLUE/ORANGE**

**SIZE : 5 TO 11**  
**USD 8.76**



**RED/DARK-BLUE**

## THRILLA



# BADMINTON



### Sole Material: Phylon Rubber + TPU non-marking sole

This material offers shock absorption, grip, and is safe for indoor courts



### Padded ankle collar

This area provides cushioning and support for the ankle, reducing discomfort during play



### Reinforced side overlays with breathable mesh

The side stripes and overlays add durability and support for lateral movements

**Ergoshape toe for comfort and fit, shifting weight to the big toe for better balance**  
This adds the key scientific benefit of the Ergoshape design while keeping it brief.



### Shock-absorbing midsole

This enhances comfort and protects against impacts during jumps and fast moves



# BADMINTON



**ARTICLE NO.  
WWBD15**



**BLACK/ORANGE**

**SIZE : 5 TO 11**  
**USD 7.90**

## SMASHER



**BLACK/FLORO-GREEN**



# BADMINTON



**Sole Material:**  
Phylon Rubber +  
TPU non-  
marking sole  
Durable,  
cushioned, and  
safe for indoor  
courts.



**Cushioned ankle collar**  
Soft padding for comfort and  
support around the ankle.



**Reinforced side overlays with breathable mesh**  
Extra side support for durability and stable  
footwork.

**Ergoshape toe for comfort and fit, shifting  
weight to the big toe for better balance**

Adds ergonomic comfort with a  
scientifically contoured shape.



**Shock-absorbing midsole**

Cushions impact and enhances comfort during play.



W I N M A R K

SOCCER

2 0 2 5 - 2 6

WINMARK



**Winmark Worldwide -**

Winmark Soccer Studs are crafted for power, grip, and balance on the field. Designed with high-traction studs, cushioned midsoles, and durable uppers, they provide stability for sharp turns, fast sprints, and strong kicks. Lightweight yet tough, they help players stay agile and comfortable through every match.

With over 40 years of expertise, Winmark Worldwide blends performance-driven technology with eco-friendly craftsmanship. Trusted across continents, our soccer studs deliver lasting durability, precision, and confidence—helping every player perform at their best.

SOCCKER



ARTICLE NO.  
WWSC27



BLACK/ORANGE/FLORO-GREEN

SIZE : 1 TO 11  
USD 5.73

## GOLDEN BOOT



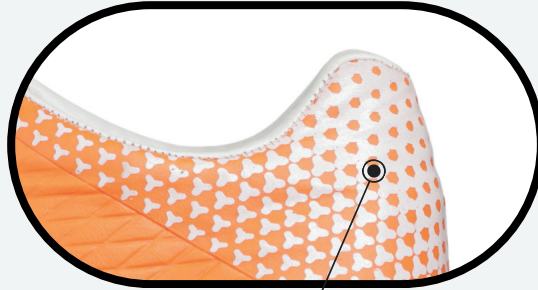
GREY/BLUE



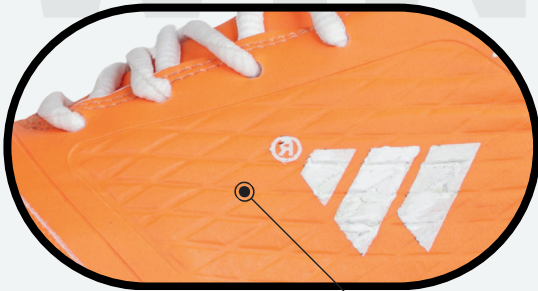
GREY/BLACK



**Sole Material:  
Double Color  
T.P.U. stud sole**  
Offers grip and  
durability on  
the pitch.



**Padded heel collar for enhanced comfort and ankle support.**  
This cushioning reduces the risk of blisters and adds stability during lateral movements.



**Durable synthetic upper with reinforcement for structural integrity and abrasion resistance.**  
This ensures a snug fit, maintains shoe shape, and withstands high wear from footwork and tackles.

**Textured strike zone for improved ball control and shooting precision.**

The textured surface helps players manage ball spin and accuracy when dribbling or shooting.



**Reinforced heel counter to stabilize the rearfoot and absorb impact.**  
This feature protects the heel from injury and improves overall foot support





S  
O  
C  
C  
E  
R

ARTICLE NO.  
WWSC26



BLACK/ORANGE/FLORO-GREEN



GREY/BLUE



GREY/BLACK

SIZE : 5 TO 11  
USD 5.50

RAPID-0



**Sole Material:**  
**Double Color**  
**T.P.U. Stud Sole**  
for enhanced traction and durability on natural and artificial turf.



**Padded heel collar for enhanced comfort and ankle support.**  
This cushioning reduces the risk of blisters and adds stability during lateral movements.



**Durable synthetic upper with reinforcement for structural integrity and abrasion resistance.**  
This ensures a snug fit, maintains shoe shape, and withstands high wear from footwork and tackles.

**Textured strike zone for improved ball control and shooting precision.**  
The textured surface helps players manage ball spin and accuracy when dribbling or shooting.



**Reinforced heel counter to stabilize the rearfoot and absorb impact.**  
This feature protects the heel especially during sudden stops and direction changes.





# ELIMINATOR

ARTICLE NO.  
**WWSC24**

S  
O  
C  
C  
E  
R



**BLACK/ORANGE/FLORO-GREEN**



**GREY/BLUE**

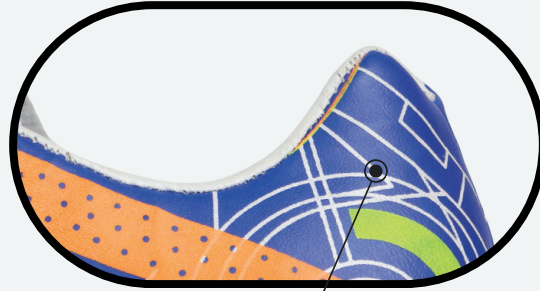


**GREY/BLACK**

**SIZE : 5 TO 11**  
**USD 5.03**



**Sole Material:**  
**Double Color**  
**T.P.U. stud sole**  
for optimal  
traction and  
durability on  
grass and turf  
pitches.



**Padded heel collar for ankle comfort and a secure fit.**  
Ensures reduced friction and better foot stability  
during quick turns.



**Synthetic upper with structural overlays for improved fit and durability.**

Overlay patterns add support and maintain upper shape through intense play.

**Textured strike zone with grip dots for enhanced ball control and shooting accuracy.**

The raised texture helps with close dribbling, passing, and effective striking.



**Reinforced heel counter for rearfoot stability and impact protection.**

Protects the heel and boosts confidence during sprints and abrupt direction changes.





# FORCE 2

**ARTICLE NO.  
WWSC22**

S  
O  
C  
C  
E  
R



**BLACK/ORANGE/FLORO-GREEN**



**GREY/BLUE**



**GREY/BLACK**

**SIZE : 1 TO 11**  
**USD 4.50**



**Sole Material:**  
Single Color  
T.P.U. Stud Sole  
for traction and  
flexibility on the  
field.



**Padded heel collar for comfort and ankle support.**  
Reduces friction and helps lock the heel securely



**Durable synthetic upper with secure lacing for structured fit.**  
Maintains foot stability and holds shape through constant use.

**Textured forefoot for better ball touch and striking precision.**

Allows improved control and accuracy during shots and passes.



**Reinforced heel counter for stability and impact protection.**

Ensures stability for sudden turns and shields against impact.





# ATTACK

ARTICLE NO.  
WWSC21

S  
O  
C  
C  
E  
R



BLACK/ORANGE/FLORO-GREEN



GREY/BLUE

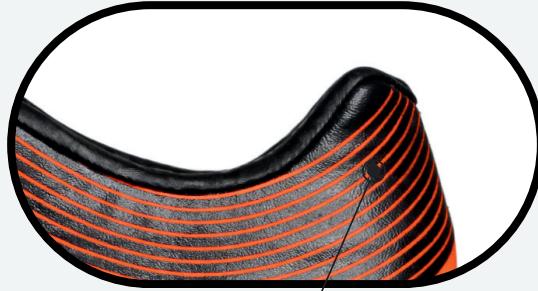


GREY/BLACK

SIZE : 11(JR) TO 11  
USD 4.04



**Sole Material:**  
**PVC Stud Sole**  
for durability  
and field grip



**Padded heel collar for comfort**  
Ensures ankle support and a soft fit  
around the heel.



**Reinforced synthetic upper for structure**  
Delivers shape retention and stability for  
the foot.

**Textured toe panel for better ball control**  
Improves precision in dribbling and striking.



**Stable heel cup for rearfoot protection**  
Adds support for abrupt movements and  
impacts.





**CR 7**

**ARTICLE NO.  
WWSC28**

**S  
O  
C  
C  
E  
R**



**BLACK/ORANGE/FLORO-GREEN**

**SIZE : 1 TO 11  
USD 6.14**



**GREY/BLACK**



**Sole Material:**  
**Double Color**  
**T.P.U. Stud Sole**  
for superior grip,  
lightweight  
cushioning, and  
durability on  
grass and turf  
fields.



**Padded and contoured heel collar for ankle support and secure lockdown.**  
The cushioning helps prevent blisters, and enhances comfort.



**Synthetic upper with structural overlays for a snug, adjustable fit and enhanced durability.**  
The wrap-around overlays lock the foot in place, maintain upper shape, and withstand frequent directional footwork.

**Reinforced and textured toe panel for improved striking power and accurate ball control.**



**External heel counter for stability and injury prevention during rapid play.**  
This rigid support protects the heel, and aids smooth push-offs and landings.



W I N M A R K

FUTSAL

2 0 2 5 - 2 6

OWIDE

OF  
ALL



### Winmark Worldwide -

Winmark Futsal Shoes are designed for speed, grip, and control on indoor courts. Featuring non-marking rubber soles for traction, cushioned midsoles for comfort, and durable uppers for stability, they support sharp turns, quick passes, and powerful shots with ease. Lightweight yet strong, they keep players agile throughout intense matches.

With 40+ years of expertise, Winmark Worldwide combines advanced design with eco-friendly craftsmanship to deliver footwear trusted worldwide. Our futsal shoes offer durability, precision, and comfort—helping every player perform with confidence and control.



**HARA**

**ARTICLE NO.  
WWFT36**

**FUTSAL**



**FLORO-GREEN/AQUA-GREEN/BLACK**



**FLORO-GREEN/BLUE**



**BLACK/WHITE**

**SIZE : 1 TO 11**  
**USD 5.56**



**Sole Material:**  
**Rubber**  
High-grip and designed for smooth indoor courts



**Padded ankle collar**  
Soft lining for secure fit and comfort during fast moves.



**Durable synthetic upper**  
Resists abrasions and maintains shape for frequent play.

**Textured toe panel for ball control**  
Enhances touch, feel, and shooting accuracy.



**Reinforced heel counter**  
Provides heel stability and protects against impacts.



# FUTSAL



F-10

ARTICLE NO.  
WWFT35

FUTSAL



BLACK/ORANGE/FLORO-GREEN

SIZE : 1 TO 11  
USD 5.03



BLACK/ORANGE



ROYAL-BLUE/WHITE



GREY/WHITE

# FUTSAL



**Sole Material:  
Phylon Rubber**  
Provides good grip and is safe for indoor futsal courts.



**Soft padded collar**  
Ensures comfort and a snug fit around the ankle.



**Durable printed synthetic upper**  
Offers abrasion resistance and bold style.

**Textured synthetic toe cap**  
Improves ball control and protects the front of the shoe.



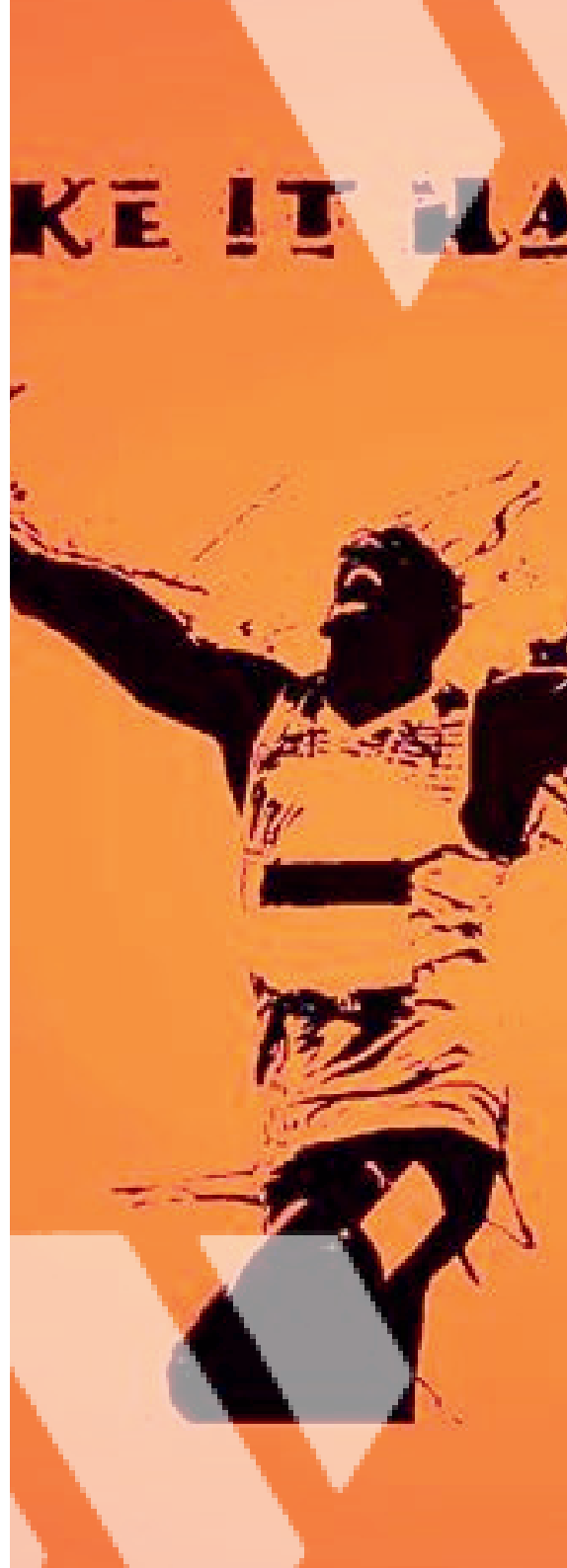
**Reinforced heel counter**  
Stabilizes the heel and absorbs impact.



WINMARK

ATHLETIC

2025 - 26



### **Winmark Worldwide -**

Winmark Athletic Spikes are designed for speed, traction, and endurance on the track. Built with lightweight materials, cushioned midsoles, and high-grip spike plates, they ensure explosive starts, stable strides, and strong finishes. Their breathable design keeps athletes comfortable, while the durable build withstands intense training and competition.

With over 40 years of expertise, Winmark Worldwide combines advanced technology with eco-friendly craftsmanship to create spikes trusted by athletes worldwide. Our athletic spikes deliver precision, power, and lasting performance—helping runners push limits and achieve their best.



ARTICLE NO.  
WWRN42

KINECT



FLORO-GREEN/RED



FLORO-GREEN/BLUE



FLORO-GREEN/BLACK

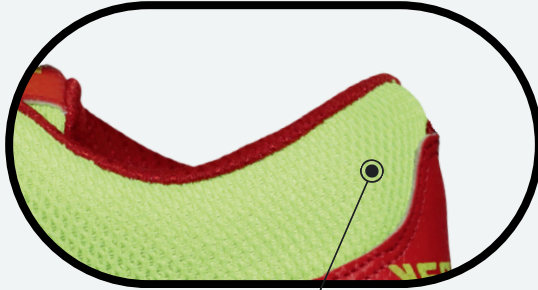
SIZE : 11(JR) TO 12  
USD 5.26



# ATHLETIC



**Sole Material:  
Phylon Rubber +  
TPU spike sole**  
Offers  
lightweight  
traction and  
speed for track  
running.



**Padded heel collar**  
Provides ankle comfort and a  
secure fit.



**Reinforced toe panel**  
Protects against abrasion and adds  
durability during sprints.



**Breathable mesh upper**  
Keeps feet cool and reduces sweat for long runs.



**Supportive heel cup**  
Stabilizes rearfoot for controlled strides.



ARTICLE NO.  
WWRN41

FALCON



BLACK/ORANGE/FLORO-GREEN



GREY/BLACK



FLORO-GREEN/BLACK

SIZE : 1 TO 11  
USD 6.43

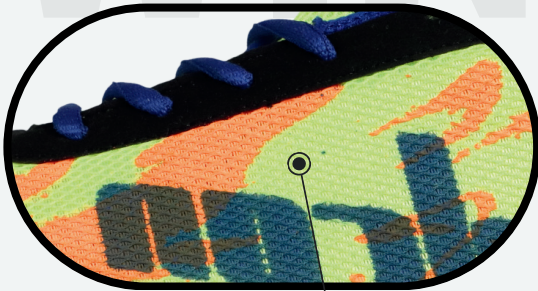


**Sole Material:  
T.P.U. + EVA  
spike sole with  
nails**

Provides firm grip and speed for track surfaces.



**Cushioned heel collar**  
Supports the ankle for a comfortable, secure fit.



**Lightweight mesh upper**  
Enhances breathability and minimizes weight.

**Reinforced toe panel**  
Protects toes and improves durability.



**Supportive heel cup**  
Stabilizes the foot for powerful sprints.



WINMARK

MADE FOR  
SERIOUS  
COOPER



#### **Winmark Worldwide -**

Winmark Basketball Shoes are built for grip, support, and explosive performance on the court. Featuring high-traction soles for quick cuts, cushioned midsoles for shock absorption, and ankle support for stability, they deliver comfort and control through every jump, sprint, and slam. Lightweight yet durable, they help players stay agile in fast-paced games.

With 40+ years of expertise, Winmark Worldwide combines innovation and eco-friendly craftsmanship to create footwear trusted worldwide. Our basketball shoes bring together strength, precision, and resilience—empowering athletes to play with confidence from tip-off to the final buzzer.

BASKETBALL

2025 - 26

# BASKETBALL



**ARTICLE NO.  
WWBK61**



**GREY/RED**

**SIZE : 5 TO 12**  
**USD 8.77**



**GREY/BLUE**



**GREY/BLACK**

## EXECUTOR



WINMARKWORLDWIDE

# BASKETBALL



**Sole Material:  
Phylon Rubber  
sole**

Durable,  
cushioned, with  
strong court  
traction.



**Padded ankle collar**

Provides comfort and support for  
quick movements.



**Supportive synthetic overlays**

Enhances lateral stability for basketball cuts.

**Reinforced toe cap**  
Protects toes and boosts shoe durability.



**Shock-absorbing midsole**

Softens landings and ensures comfort  
during play.



# PRODUCT CATALOGUE

2025 - 26

**est.1982**

**[www.winmarkindia.com](http://www.winmarkindia.com)**

**R.O. : WX 43 Basti nau, Near Arora Ice Factory**

**M.U. : Plot no.7, Sangal sohal, opp jalandhar kunj gate no. 2**

**Contact: +91-94172-77537, +91-73474-77537, Whatsapp: +91-7042656457**

**email: [info@winmarkindia.com](mailto:info@winmarkindia.com)**